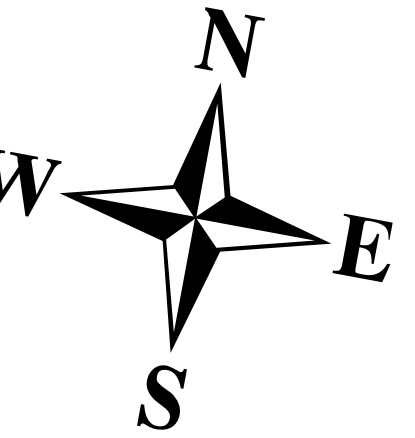


TOWN OF  
**EMBDEN**

SOMERSET COUNTY  
MAINE

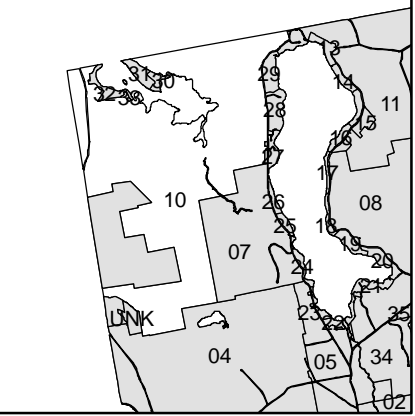
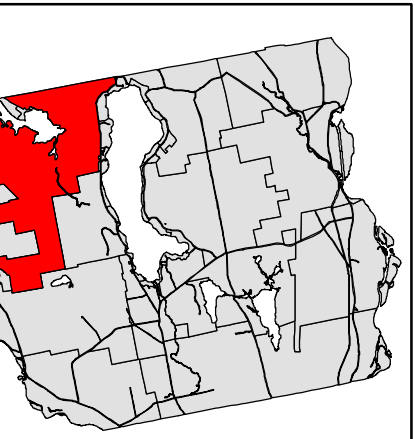
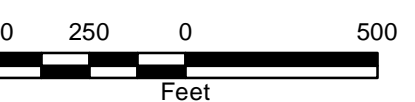


**LEGEND**

- Water\_Line
- Marsh\_Line
- Easement\_Line
- Ghost\_Line

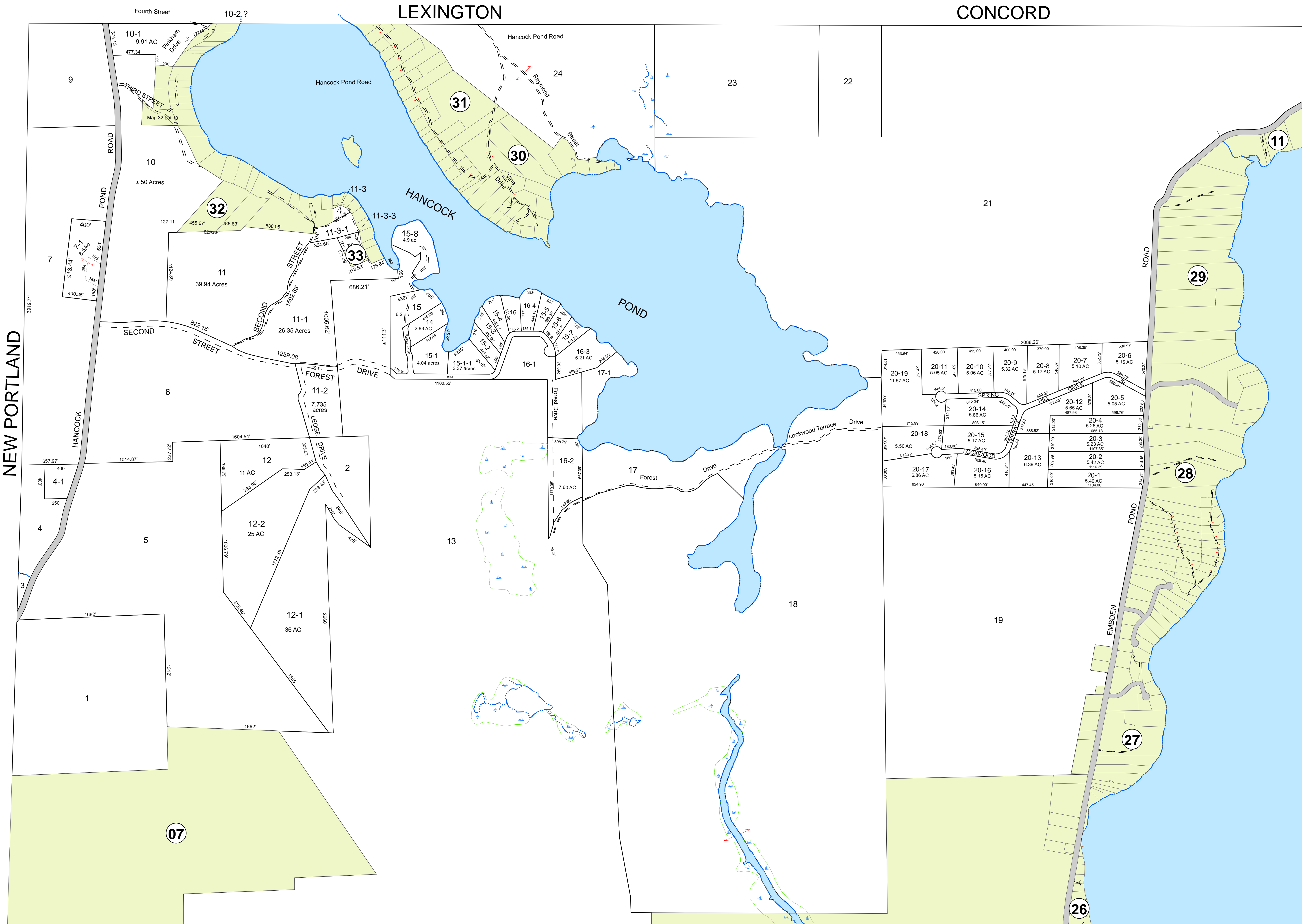
For Assessment Purposes.  
Not to be used for conveyances.

Maps originally compiled by  
Sackett & Brake Survey.  
Digitally updated thru April 1, 2019  
By  
Eastern Mapping Services  
Newburgh, Maine  
207-234-2777



**Map 10**

Printed: 8/14/2019  
Issued: 4/1/2019



NEW PORTLAND

LEXINGTON

CONCORD

HANCOCK POND

Fourth Street

10-1  
9.91 AC

9

10  
± 50 Acres

7

6

4-1

4

5

1

07

11 AC

12-2  
25 AC

12-1  
36 AC

11  
39.94 Acres

11-1  
26.35 Acres

11-2  
7.735 acres

11-3

11-3-3

11-3-1

11

15

14  
2.83 AC

15-1  
4.04 acres

15-1-1  
3.37 acres

15

16-1

16-2  
7.60 AC

13

17  
Forest Drive

16-1

16-3  
5.21 AC

17-1

15-8  
4.9 ac

15

16-4

15-3

15-6

15-7

16-1

16-1

31

30

32

33

15

14

15-1

15-1-1

15

16-1

16-2

13

17

16-1

16-3

17-1

15-8

15

16-4

15-3

15-6

15-7

16-1

16-1

23

22

21

11

29

28

27

26

