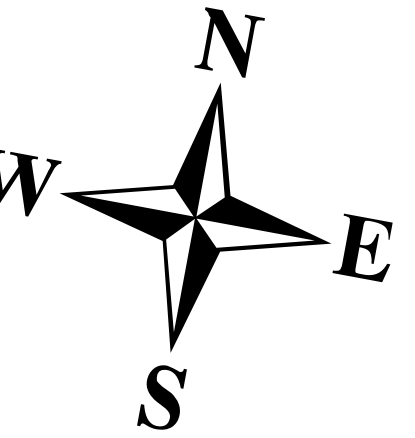




TOWN OF
EMBDEN

SOMERSET COUNTY
MAINE

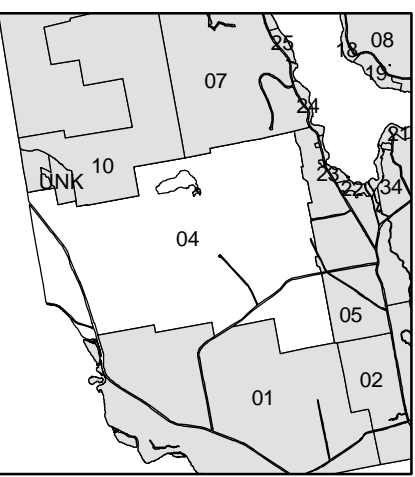
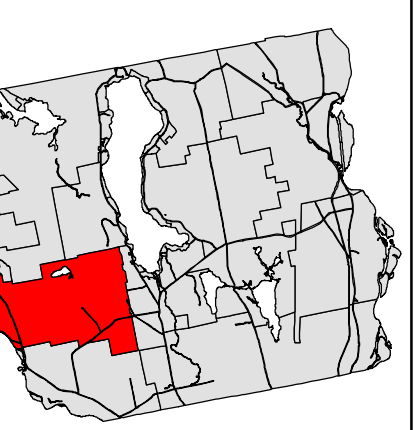


LEGEND

- Water_Line
- Marsh_Line
- Easement_Line
- Ghost_Line

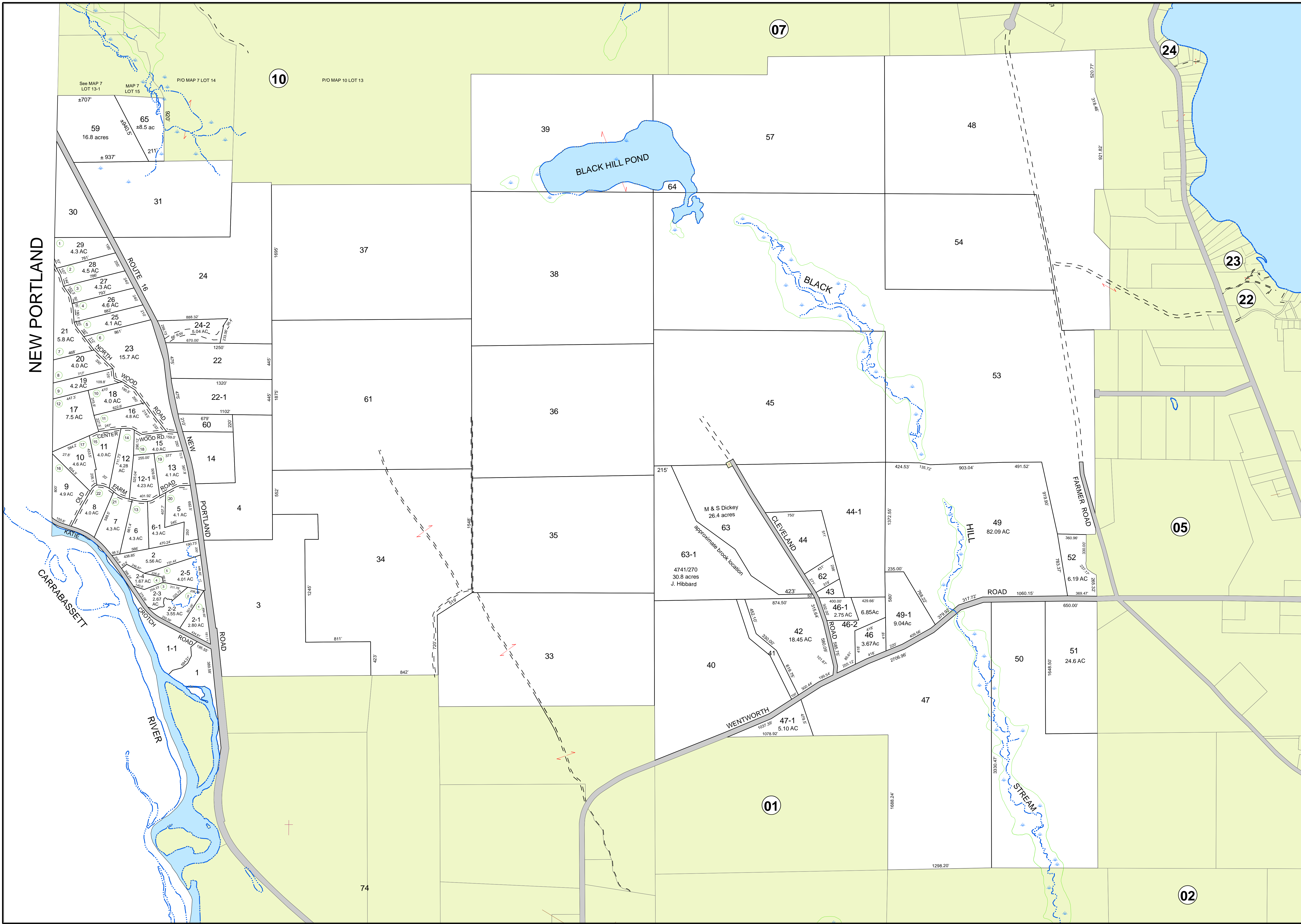
For Assessment Purposes.
Not to be used for conveyances.

Maps originally compiled by
Sackett & Brake Survey.
Digitally updated thru April 1, 2019
By
Eastern Mapping Services
Newburgh, Maine
207-234-2777



Map 04

Printed: 8/14/2019
Issued: 4/1/2019



NEW PORTLAND

CARRABASSETT RIVER

BLACK HILL POND

BLACK HILL STREAM

10

07

24

23

22

05

01

02

BLACK HILL POND

BLACK HILL STREAM

M & S Dickey
26.4 acres
approximate brook location

63-1
4741/270
30.8 acres
J. Hibbard

47-1
5.10 AC

42
18.45 AC

63
26.4 acres

44
2.75 AC

46-1
2.75 AC

46-2
3.67 AC

49-1
9.04 AC

46
3.67 AC

49
82.09 AC

44-1
2.75 AC

46-1
6.85 AC

46-2
3.67 AC

49-1
9.04 AC

46
3.67 AC

49
82.09 AC

44-1
2.75 AC

46-1
6.85 AC

46-2
3.67 AC

49-1
9.04 AC

46
3.67 AC

49
82.09 AC

44-1
2.75 AC

46-1
6.85 AC

46-2
3.67 AC

49-1
9.04 AC

46
3.67 AC

49
82.09 AC

44-1
2.75 AC

46-1
6.85 AC

46-2
3.67 AC

49-1
9.04 AC

46
3.67 AC

49
82.09 AC

44-1
2.75 AC

46-1
6.85 AC

46-2
3.67 AC

49-1
9.04 AC

46
3.67 AC

49
82.09 AC

44-1
2.75 AC

46-1
6.85 AC

46-2
3.67 AC

49-1
9.04 AC

46
3.67 AC

49
82.09 AC

44-1
2.75 AC

46-1
6.85 AC

46-2
3.67 AC

49-1
9.04 AC

46
3.67 AC

49
82.09 AC

44-1
2.75 AC

46-1
6.85 AC

46-2
3.67 AC

49-1
9.04 AC

46
3.67 AC

49
82.09 AC

44-1
2.75 AC

46-1
6.85 AC

46-2
3.67 AC

49-1
9.04 AC

46
3.67 AC

49
82.09 AC

44-1
2.75 AC

46-1
6.85 AC

46-2
3.67 AC

49-1
9.04 AC

46
3.67 AC

49
82.09 AC

44-1
2.75 AC

46-1
6.85 AC

46-2
3.67 AC

49-1
9.04 AC

46
3.67 AC

49
82.09 AC

44-1
2.75 AC

46-1
6.85 AC

46-2
3.67 AC

49-1
9.04 AC

46
3.67 AC

49
82.09 AC

44-1
2.75 AC

46-1
6.85 AC

46-2
3.67 AC

49-1
9.04 AC

46
3.67 AC

49
82.09 AC

44-1
2.75 AC

46-1
6.85 AC

46-2
3.67 AC

49-1
9.04 AC

46
3.67 AC

49
82.09 AC

44-1
2.75 AC

46-1
6.85 AC

46-2
3.67 AC

49-1
9.04 AC

46
3.67 AC

49
82.09 AC

44-1
2.75 AC

46-1
6.85 AC

46-2
3.67 AC

49-1
9.04 AC

46
3.67 AC

49
82.09 AC

44-1
2.75 AC

46-1
6.85 AC

46-2
3.67 AC

49-1
9.04 AC

46
3.67 AC

49
82.09 AC

44-1
2.75 AC

46-1
6.85 AC

46-2
3.67 AC

49-1
9.04 AC

46
3.67 AC

49
82.09 AC

44-1
2.75 AC

46-1
6.85 AC

46-2
3.67 AC

49-1
9.04 AC

46
3.67 AC

49
82.09 AC

44-1
2.75 AC

46-1
6.85 AC

46-2
3.67 AC

49-1
9.04 AC

46
3.67 AC

49
82.09 AC

44-1
2.75 AC

46-1
6.85 AC

46-2
3.67 AC

49-1
9.04 AC

46
3.67 AC

49
82.09 AC

44-1
2.75 AC

46-1
6.85 AC

46-2
3.67 AC

49-1
9.04 AC

46
3.67 AC

49
82.09 AC

44-1
2.75 AC

46-1
6.85 AC

46-2
3.67 AC

49-1
9.04 AC

46
3.67 AC

49
82.09 AC

44-1
2.75 AC

46-1
6.85 AC

46-2
3.67 AC

49-1
9.04 AC

46
3.67 AC

49
82.09 AC

44-1
2.75 AC

46-1
6.85 AC

46-2
3.67 AC

49-1
9.04 AC

46
3.67 AC

49
82.09 AC

44-1
2.75 AC

46-1
6.85 AC

46-2
3.67 AC

49-1
9.04 AC

46
3.67 AC

49
82.09 AC

44-1
2.75 AC

46-1
6.85 AC

46-2
3.67 AC

49-1
9.04 AC

46
3.67 AC

49
82.09 AC

44-1
2.75 AC

46-1
6.85 AC

46-2
3.67 AC

49-1
9.04 AC

46
3.67 AC

49
82.09 AC

44-1
2.75 AC

46-1
6.85 AC

46-2
3.67 AC

49-1
9.04 AC

46
3.67 AC

49
82.09 AC

44-1
2.75 AC

46-1
6.85 AC

46-2
3.67 AC

49-1
9.04 AC

46
3.67 AC

49
82.09 AC

44-1
2.75 AC

46-1
6.85 AC

46-2
3.67 AC

49-1
9.04 AC

46
3.67 AC

49
82.09 AC

44-1
2.75 AC

46-1
6.85 AC

46-2
3.67 AC

49-1
9.04 AC

46
3.67 AC

49
82.09 AC

44-1
2.75 AC

46-1
6.85 AC

46-2
3.67 AC

49-1
9.04 AC

46
3.67 AC

49
82.09 AC

44-1
2.75 AC

46-1
6.85 AC

46-2
3.67 AC

49-1
9.04 AC

46
3.67 AC

49
82.09 AC

44-1
2.75 AC

46-1
6.85 AC

46-2
3.67 AC

49-1
9.04 AC

46
3.67 AC

49
82.09 AC

44-1
2.75 AC

46-1
6.85 AC

46-2
3.67 AC

49-1
9.04 AC

46
3.67 AC

49
82.09 AC

44-1
2.75 AC

46-1
6.85 AC

46-2
3.67 AC

49-1
9.04 AC

46
3.67 AC

49
82.09 AC

44-1
2.75 AC

46-1
6.85 AC

46-2
3.67 AC

49-1
9.04 AC

46
3.67 AC

49
82.09 AC

44-1
2.75 AC

46-1
6.85 AC

46-2
3.67 AC

49-1
9.04 AC

46
3.67 AC

49
82.09 AC

44-1
2.75 AC

46-1
6.85 AC

46-2
3.67 AC

49-1
9.04 AC

46
3.67 AC

49
82.09 AC

44-1
2.75 AC

46-1
6.85 AC

46-2
3.67 AC

49-1
9.04 AC

46
3.67 AC

49
82.09 AC

44-1
2.75 AC

46-1
6.85 AC

46-2
3.67 AC

49-1
9.04 AC

46
3.67 AC

49
82.09 AC

44-1
2.75 AC

46-1
6.85 AC

46-2
3.67 AC

49-1
9.04 AC

46
3.67 AC

49
82.09 AC

4