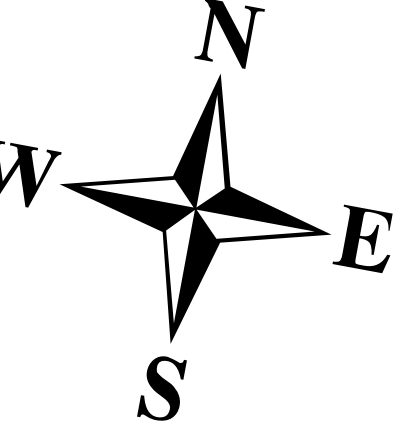




TOWN OF  
**EMBDEN**

SOMERSET COUNTY  
MAINE

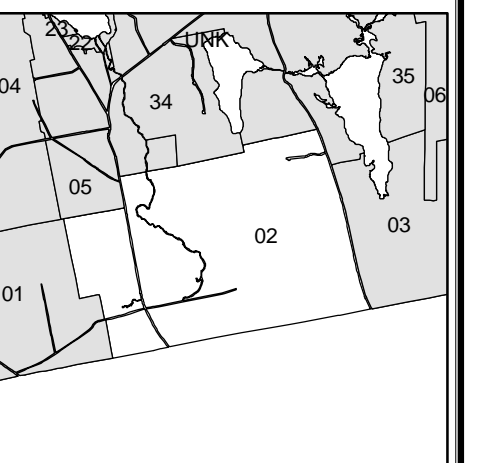
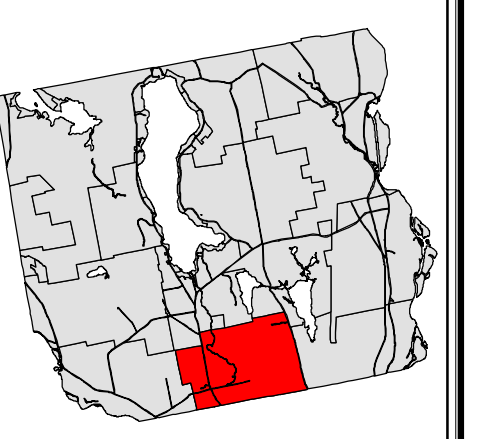
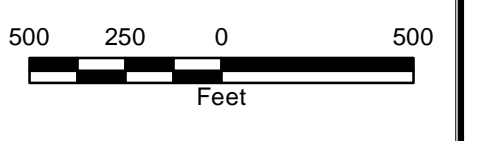


**LEGEND**

- Water\_Line
- Marsh\_Line
- Easement\_Line
- Ghost\_Line

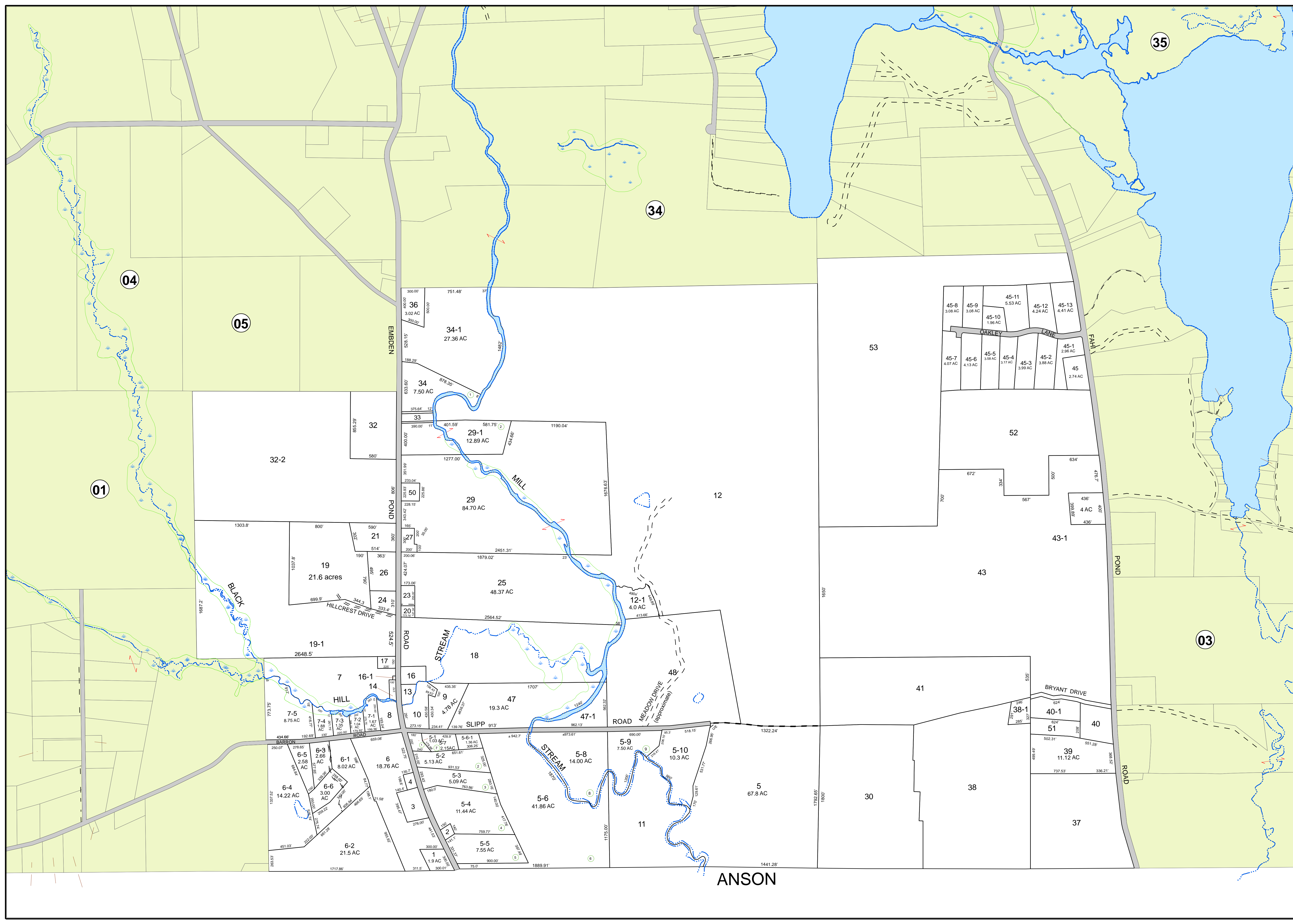
For Assessment Purposes.  
Not to be used for conveyances.

Maps originally compiled by  
Sackett & Brake Survey.  
Digitally updated thru April 1, 2019  
By  
Eastern Mapping Services  
Newburgh, Maine  
207-234-2777



**Map 02**

Printed: 8/14/2019  
Issued: 4/1/2019



04

05

01

34

35

36  
3.02 AC

34-1  
27.36 AC

34  
7.50 AC

33  
12.89 AC

50  
84.70 AC

32  
21.6 acres

19  
21.6 acres

26

24

19-1  
2648.5'

7  
8.75 AC

6-5  
2.58 AC

6-4  
14.22 AC

6-2  
21.5 AC

6-3  
2.66 AC

6-1  
8.02 AC

6-6  
3.00 AC

16-1  
19.3 AC

10  
4.78 AC

5-2  
5.13 AC

5-3  
5.09 AC

5-4  
11.44 AC

5-5  
7.55 AC

1  
1.9 AC

18  
48.37 AC

12-1  
4.0 AC

5-8  
14.00 AC

5-6  
41.86 AC

5-9  
7.50 AC

5-10  
10.3 AC

11  
67.8 AC

13  
19.3 AC

9  
19.3 AC

47  
19.3 AC

47-1  
19.3 AC

48

41

30

17  
8.02 AC

8

5-1  
1.36 AC

5-7  
2.15 AC

5-11  
5.53 AC

5-12  
4.24 AC

5-13  
4.41 AC

14  
3.00 AC

16

45-8  
3.08 AC

45-9  
3.08 AC

45-10  
1.96 AC

45-11  
5.53 AC

45-12  
4.24 AC

45-13  
4.41 AC

15  
2.74 AC

16-1  
19.3 AC

10  
4.78 AC

5-2  
5.13 AC

5-3  
5.09 AC

5-4  
11.44 AC

5-5  
7.55 AC

1  
1.9 AC

18  
48.37 AC

12-1  
4.0 AC

5-8  
14.00 AC

5-6  
41.86 AC

5-9  
7.50 AC

5-10  
10.3 AC

11  
67.8 AC

13  
19.3 AC

9  
19.3 AC

47  
19.3 AC

47-1  
19.3 AC

48

41

30

17  
8.02 AC

8

5-1  
1.36 AC

5-7  
2.15 AC

5-11  
5.53 AC

5-12  
4.24 AC

5-13  
4.41 AC

14  
3.00 AC

16

45-8  
3.08 AC

45-9  
3.08 AC

45-10  
1.96 AC

45-11  
5.53 AC

45-12  
4.24 AC

45-13  
4.41 AC

15  
2.74 AC

16-1  
19.3 AC

10  
4.78 AC

5-2  
5.13 AC

5-3  
5.09 AC

5-4  
11.44 AC

5-5  
7.55 AC

1  
1.9 AC

18  
48.37 AC

12-1  
4.0 AC

5-8  
14.00 AC

5-6  
41.86 AC

5-9  
7.50 AC

5-10  
10.3 AC

11  
67.8 AC

13  
19.3 AC

9  
19.3 AC

47  
19.3 AC

47-1  
19.3 AC

48

41

30

17  
8.02 AC

8

5-1  
1.36 AC

5-7  
2.15 AC

5-11  
5.53 AC

5-12  
4.24 AC

5-13  
4.41 AC

14  
3.00 AC

16

45-8  
3.08 AC

45-9  
3.08 AC

45-10  
1.96 AC

45-11  
5.53 AC

45-12  
4.24 AC

45-13  
4.41 AC

15  
2.74 AC

16-1  
19.3 AC

10  
4.78 AC

5-2  
5.13 AC

5-3  
5.09 AC

5-4  
11.44 AC

5-5  
7.55 AC

1  
1.9 AC

18  
48.37 AC

12-1  
4.0 AC

5-8  
14.00 AC

5-6  
41.86 AC

5-9  
7.50 AC

5-10  
10.3 AC

11  
67.8 AC

13  
19.3 AC

9  
19.3 AC

47  
19.3 AC

47-1  
19.3 AC

48

41

30

17  
8.02 AC

8

5-1  
1.36 AC

5-7  
2.15 AC

5-11  
5.53 AC

5-12  
4.24 AC

5-13  
4.41 AC

14  
3.00 AC

16

45-8  
3.08 AC

45-9  
3.08 AC

45-10  
1.96 AC

45-11  
5.53 AC

45-12  
4.24 AC

45-13  
4.41 AC

15  
2.74 AC

16-1  
19.3 AC

10  
4.78 AC

5-2  
5.13 AC

5-3  
5.09 AC

5-4  
11.44 AC

5-5  
7.55 AC

1  
1.9 AC

18  
48.37 AC

12-1  
4.0 AC

5-8  
14.00 AC

5-6  
41.86 AC

5-9  
7.50 AC

5-10  
10.3 AC

11  
67.8 AC

13  
19.3 AC

9  
19.3 AC

47  
19.3 AC

47-1  
19.3 AC

48

41

30

17  
8.02 AC

8

5-1  
1.36 AC

5-7  
2.15 AC

5-11  
5.53 AC

5-12  
4.24 AC

5-13  
4.41 AC

14  
3.00 AC

16

45-8  
3.08 AC

45-9  
3.08 AC

45-10  
1.96 AC

45-11  
5.53 AC

45-12  
4.24 AC

45-13  
4.41 AC

15  
2.74 AC

16-1  
19.3 AC

10  
4.78 AC

5-2  
5.13 AC

5-3  
5.09 AC

5-4  
11.44 AC

5-5  
7.55 AC

1  
1.9 AC

18  
48.37 AC

12-1  
4.0 AC

5-8  
14.00 AC

5-6  
41.86 AC

5-9  
7.50 AC

5-10  
10.3 AC

11  
67.8 AC

13  
19.3 AC

9  
19.3 AC

47  
19.3 AC

47-1  
19.3 AC

48

41

30

17  
8.02 AC

8

5-1  
1.36 AC

5-7  
2.15 AC

5-11  
5.53 AC

5-12  
4.24 AC

5-13  
4.41 AC

14  
3.00 AC

16

45-8  
3.08 AC

45-9  
3.08 AC

45-10  
1.96 AC

45-11  
5.53 AC

45-12  
4.24 AC

45-13  
4.41 AC

15  
2.74 AC

16-1  
19.3 AC

10  
4.78 AC

5-2  
5.13 AC

5-3  
5.09 AC

5-4  
11.44 AC

5-5  
7.55 AC

1  
1.9 AC

18  
48.37 AC

12-1  
4.0 AC

5-8  
14.00 AC

5-6  
41.86 AC

5-9  
7.50 AC

5-10  
10.3 AC

11  
67.8 AC

13  
19.3 AC

9  
19.3 AC

47  
19.3 AC

47-1  
19.3 AC

48

41

30

17  
8.02 AC

8

5-1  
1.36 AC

5-7  
2.15 AC

5-11  
5.53 AC