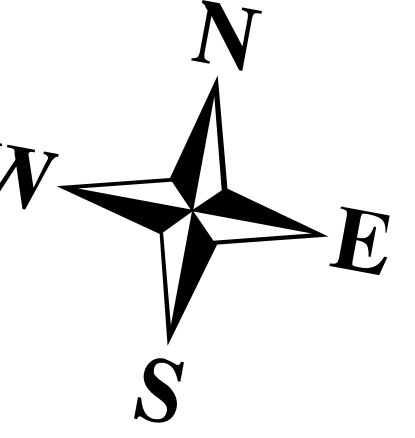


TOWN OF  
**EMBDEN**

SOMERSET COUNTY  
MAINE

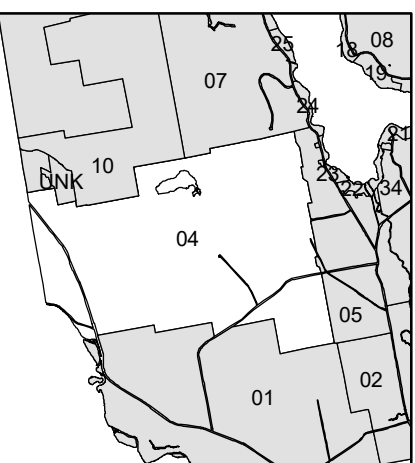
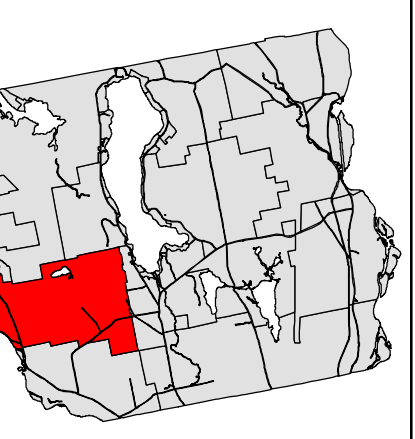
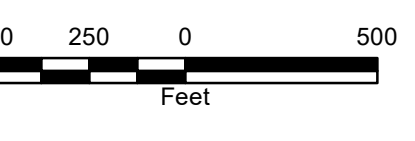


**LEGEND**

- Water\_Line
- Marsh\_Line
- Easement\_Line
- Ghost\_Line

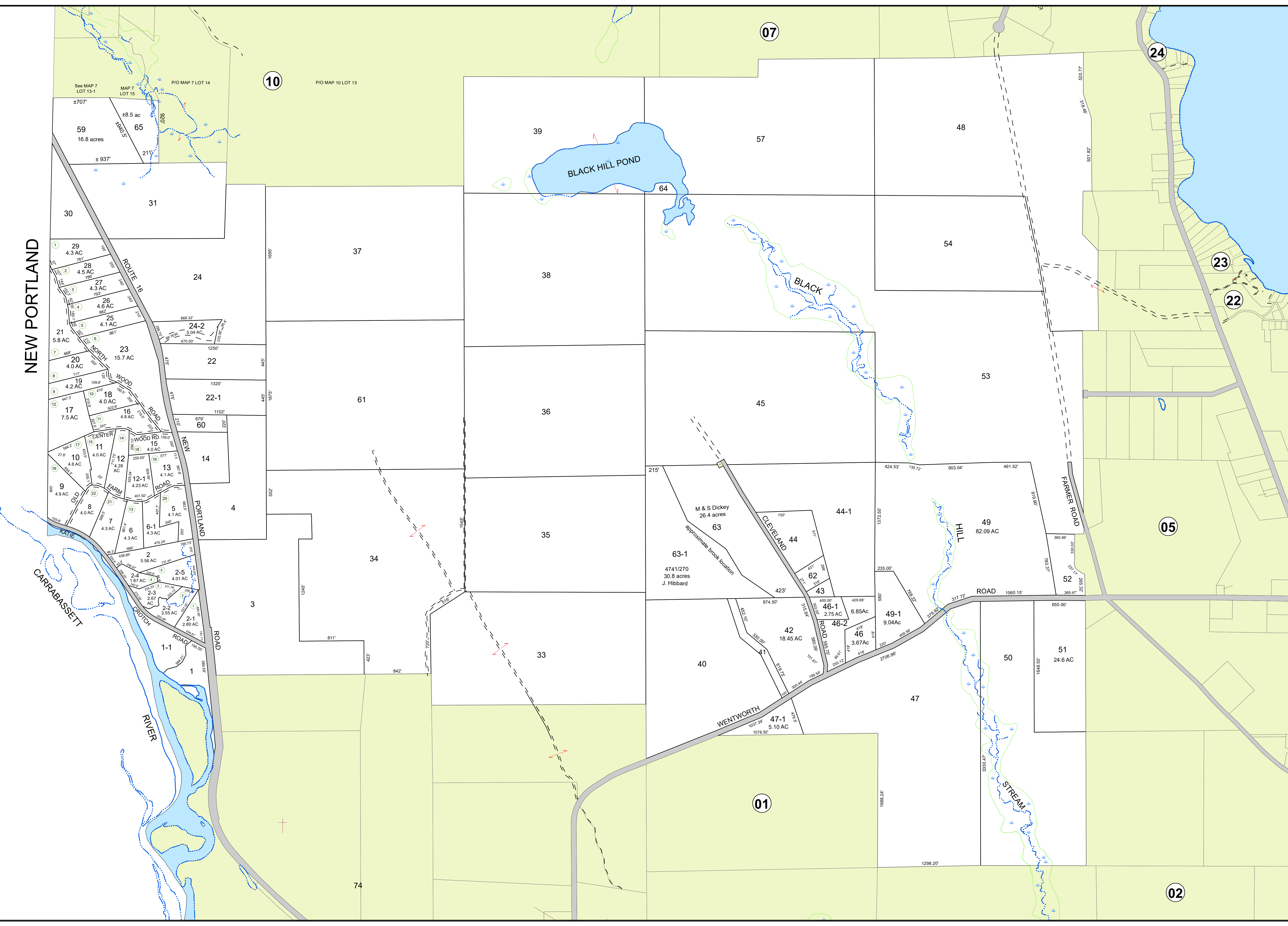
For Assessment Purposes.  
Not to be used for conveyances.

Maps originally compiled by  
Sackett & Brake Survey.  
Digitally updated thru April 1, 2017  
By  
Eastern Mapping Services  
Newburgh, Maine  
207-234-2777



**Map 04**

Printed: 8/30/2017  
Issued: 4/1/2017



NEW PORTLAND

CARRABASSETT RIVER

BLACK HILL POND

BLACK HILL STREAM

M & S Dickey  
26.4 acres

63-1  
4741/270  
30.8 acres  
J. Hibbard

47-1  
5.10 AC

42  
18.45 AC

46-1  
2.75 AC

46-2  
3.67 AC

46  
6.85 AC

44  
2.75 AC

43  
3.15 AC

44-1  
2.75 AC

49-1  
9.04 AC

49  
82.09 AC

51  
24.6 AC

52  
2.80 AC

50  
2.80 AC

53  
2.80 AC

54  
2.80 AC

55  
2.80 AC

56  
2.80 AC

57  
2.80 AC

58  
2.80 AC

59  
2.80 AC

60  
2.80 AC

61  
2.80 AC

62  
2.80 AC

63  
2.80 AC

64  
2.80 AC

65  
2.80 AC

66  
2.80 AC

67  
2.80 AC

68  
2.80 AC

69  
2.80 AC

70  
2.80 AC

71  
2.80 AC

72  
2.80 AC

73  
2.80 AC

74  
2.80 AC

75  
2.80 AC

76  
2.80 AC

77  
2.80 AC

78  
2.80 AC

79  
2.80 AC

80  
2.80 AC

81  
2.80 AC

82  
2.80 AC

83  
2.80 AC

84  
2.80 AC

85  
2.80 AC

86  
2.80 AC

87  
2.80 AC

88  
2.80 AC

89  
2.80 AC

90  
2.80 AC

91  
2.80 AC

92  
2.80 AC

93  
2.80 AC

94  
2.80 AC

95  
2.80 AC

96  
2.80 AC

97  
2.80 AC

98  
2.80 AC

99  
2.80 AC

100  
2.80 AC

10

07

24

23

22

05

01

02

PIO MAP 10 LOT 13

See MAP 7 LOT 13-1

MAP 7 LOT 15

PIO MAP 7 LOT 14

±8.5 ac

±937'

211'

±707'

±707'

±707'

±707'

±707'

±707'

±707'

±707'

±707'

±707'

±707'

±707'

±707'

±707'

±707'

±707'

±707'

±707'

±707'

±707'

±707'

±707'

±707'

±707'

±707'

±707'

±707'

±707'

±707'

±707'

±707'

±707'

±707'

±707'

±707'

±707'

±707'

±707'

±707'

±707'

±707'

±707'

±707'

±707'

±707'

±707'

±707'

±707'

±707'

±707'

±707'

±707'

±707'

±707'

±707'

±707'

±707'

±707'

±707'

±707'

±707'

±707'

±707'

±707'

±707'

±707'

±707'

±707'

±707'

±707'

±707'

±707'

±707'

±707'

±707'

±707'

±707'

±707'

±707'

±707'

±707'

±707'

±707'

±707'

±707'

±707'

±707'

±707'

±707'

±707'

±707'

±707'

±707'

±707'

±707'

±707'

±707'

±707'

±707'

±707'

±707'

±707'

±707'

±707'

±707'

±707'

±707'

±707'

±707'

±707'

±707'

±707'

±707'

±707'

±707'

±707'

±707'

±707'

±707'

±707'

±707'

±707'

±707'

±707'

±707'

±707'

±707'

±707'

±707'

±707'

±707'

±707'

±707'

±707'

±707'

±707'

±707'

±707'

±707'

±707'

±707'

±707'

±707'

±707'

±707'

±707'

±707'

±707'

±707'

±707'

±707'

±707'

±707'

±707'

±707'

±707'

±707'

±707'

±707'

±707'

</